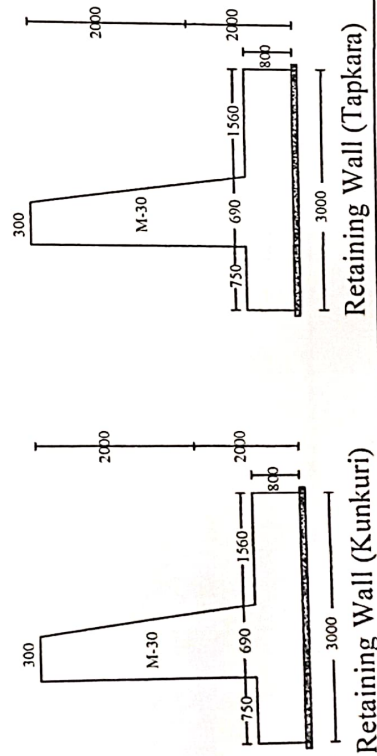
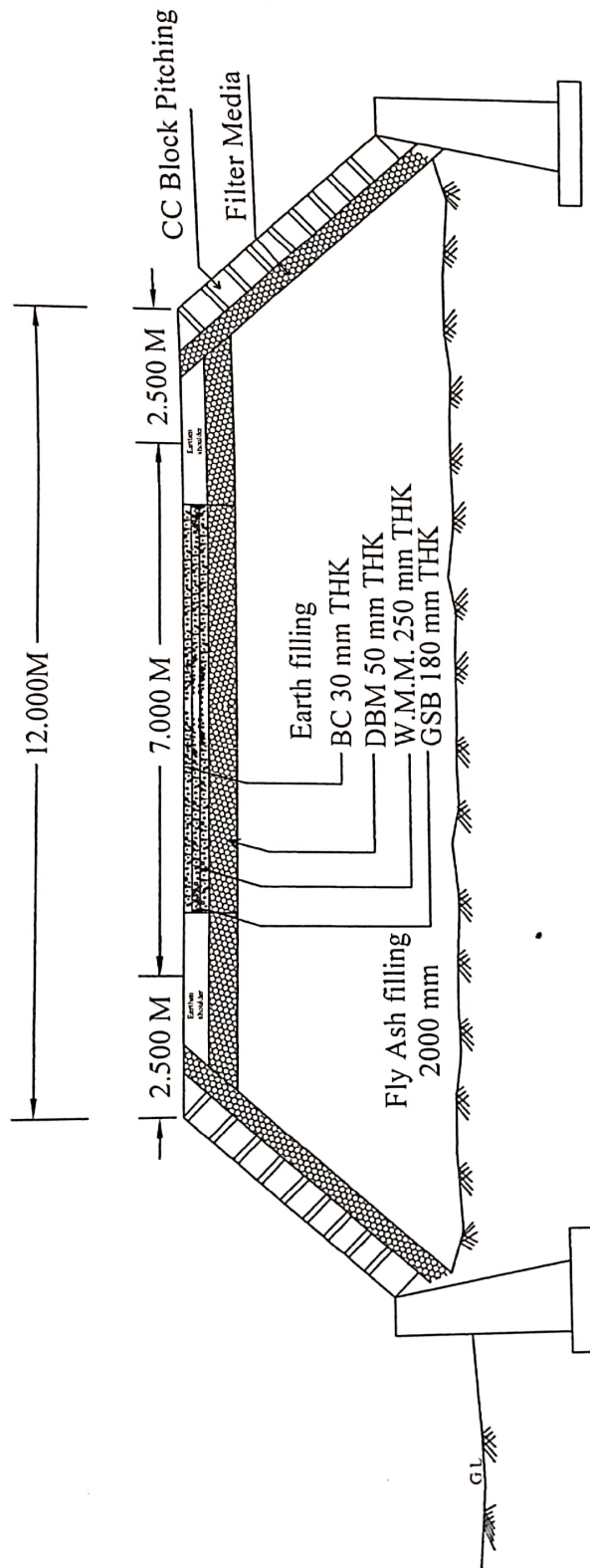


# CONSTRUCTION OF H.L. BRIDGE ACROSS SIRI RIVER ON KUNKURI-TAPKARA -LAWAKERA ROAD



Office of the Executive Engineer  
P.W.D. Bridge Division Ambikapur

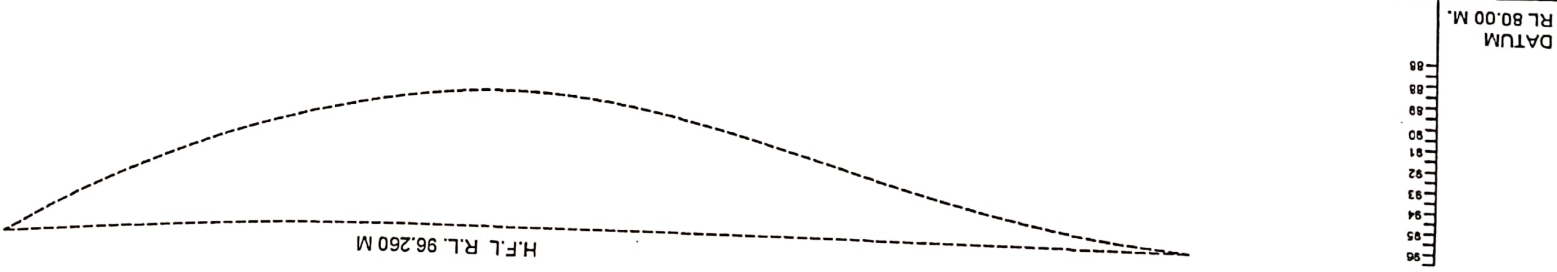
X-Section of Approach for Construction of H.L. Bridge  
Across Siri River on Kunkuri=Tapkara Lawakera Road

Sub-Engg.

S.D.




E.E.

# CONSTRUCTION OF HIGH LEVEL BRIDGE ACROSS SIRI RIVER ON KUNKURI TAPKARA LAWAKERA ROAD <<<<< KUNKURI SIDE TAPKARA SIDE >>>>>



CHAINAGE IN METER	GROUND LEVEL (M)
00.00	96.260
10.00	95.860
20.00	93.830
30.00	92.150
40.00	90.690
50.00	90.180
60.00	89.650
70.00	90.270
80.00	90.500
90.00	90.450
100.00	90.770
110.00	90.950

## X-SECTION OF SIRI RIVER

SUBMITTED BY :		<div>  </div>
<div>  </div>	<div>  </div>	
OFFICE OF THE EXECUTIVE ENGINEER P.W.D. BRIDGE CONSTRUCTION DIVISION - AMBIKAPUR		L-SECTION OF APPROACH ROAD ACROSS SIRI RIVER ON KUNKURI - TAPKARA ROAD

SITE PLAN


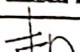
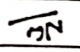

S.N.O.	LINE	LEN
1.	OA	60
2.	OD	60
3.	AB	30
4.	BC	80
5.	DE	80
6.	EF	70
7.	OD1	180
8.	OD2	150
9.	OU1	70
10.	OU2	190
11.	OU3	80
12.	OU4	100

Proposed Road Details:

- Proposed Road Length = 100.00 Meters
- Proposed Road Width = 10.00 Meters
- Proposed Road Length = 100.00 Meters
- Proposed Road Width = 10.00 Meters

Other Labels:

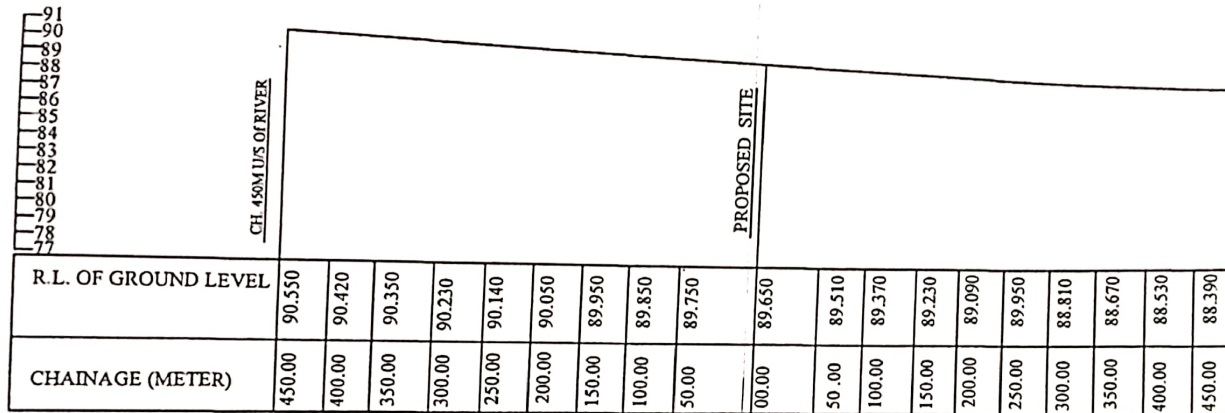
- KUNAKUR SIDE
- TAPKANA SIDE
- JUNGLE
- ROCK
- US 80
- US 70
- US 45
- US 25
- US 101
- US 102
- US 103
- US 104
- US 105
- US 106
- US 107
- US 108
- US 109
- US 110
- US 111
- US 112
- US 113
- US 114
- US 115
- US 116
- US 117
- US 118
- US 119
- US 120

JYOS CL LON		- 10-272/105/2008 - ON ENLIGHTEN	
THE TRUTHFUL-TRUTHFUL-TRUTHFUL AND THE TRUTHFUL-TRUTHFUL AND THE TRUTHFUL-TRUTHFUL		 ON ENLIGHTEN	
HONORARY - HONORARY HONORARY HONORARY HONORARY HONORARY HONORARY HONORARY			
 S.D.		SUBMITTED BY	
 L.L.		APPROVED BY	
			

# Construction of H.L. Bridge Across SIRI River on Kunkuri - Tapkara Road

<<< U/S SIDE

D/S SIDE >>>



L- SECTION OF RIVER (SLOPE OF RIVER=1:0.0012)

OFFICE OF THE EXECUTIVE ENGINEER  
P.W.D. BRIDGE CONSTRUCTION  
DIVISION - AMBIKAPUR

  
SUB ENGINEER

  
S.D.O.

  
E. E.

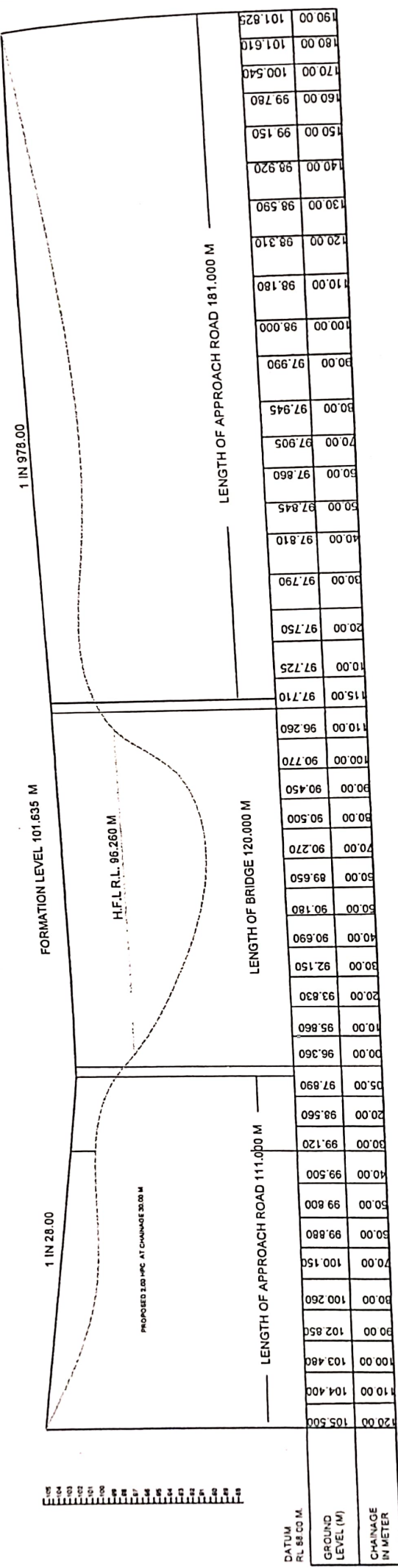
L S ECTION SLOPE OF SIRI RIVER ON KUNKURI -  
TAPKARA ROAD



# CONSTRUCTION OF HIGH LEVEL ACROSS SIRI RIVER ON KUNKURI TAPKARA LAWEKERA ROAD

TAPKARA SIDE >>>>>

<<<<< KUNKURI SIDE



## L-SECTION OF APPROACH ROAD

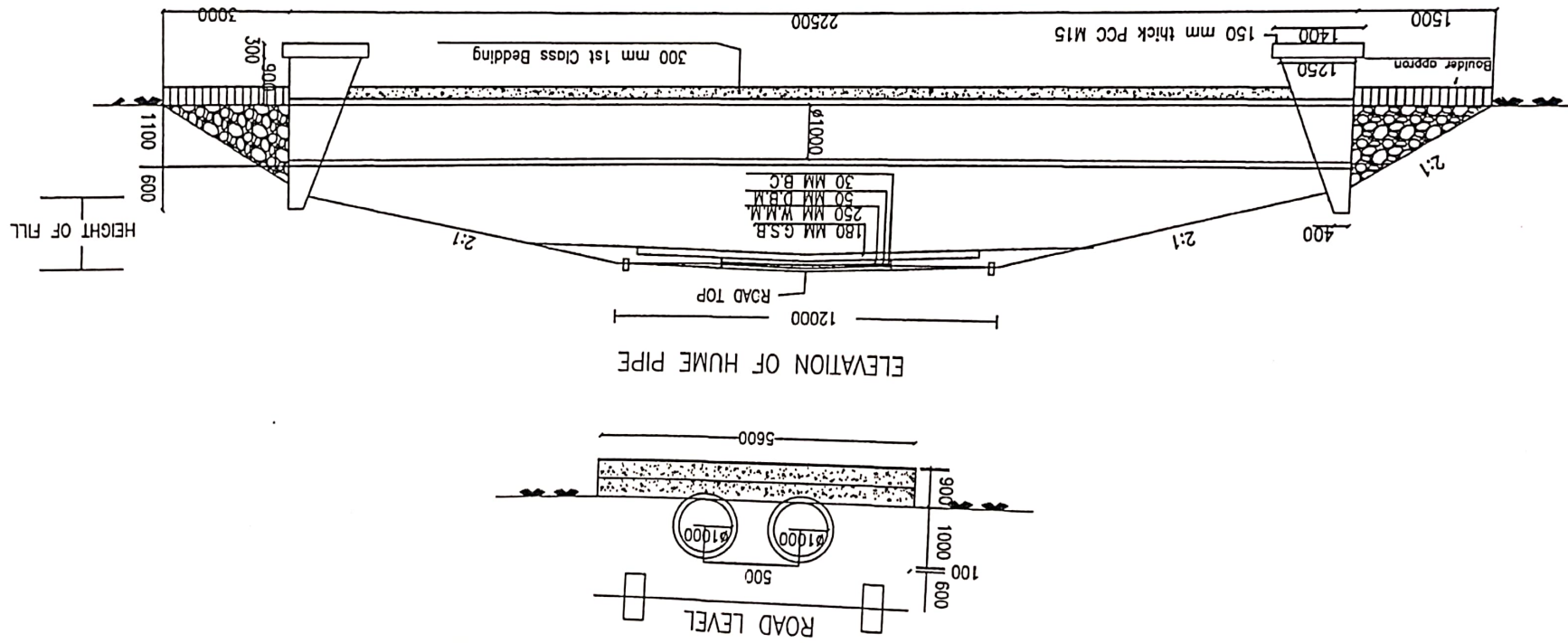
OFFICE OF THE EXECUTIVE ENGINEER  
P.W.D. BRIDGE CONSTRUCTION  
DIVISION - AMBIKAPUR

SUB ENGINEER  
S.D.O.

L-SECTION OF APPROACH ROAD ACROSS SIRI RIVER ON  
KUNKURI - TAPKARA LAWEKERA ROAD

E. E.

## CONSTRUCTION OF HL BRIDGE ACROSS SIRI RIVER ON KUNNKURI-TAPKARA-LAWAKERA ROAD



X-SECTION OF HUMME PIPE

Office of the Executive Engineer  
P.W.D. Bridge Division Ambikapur  
Construction of Hume Pipe Culvert At Chainage  
30 M on Kunkurti Tapkara Lawakera Road

Executive Engineer

SDO

Sub Engineer